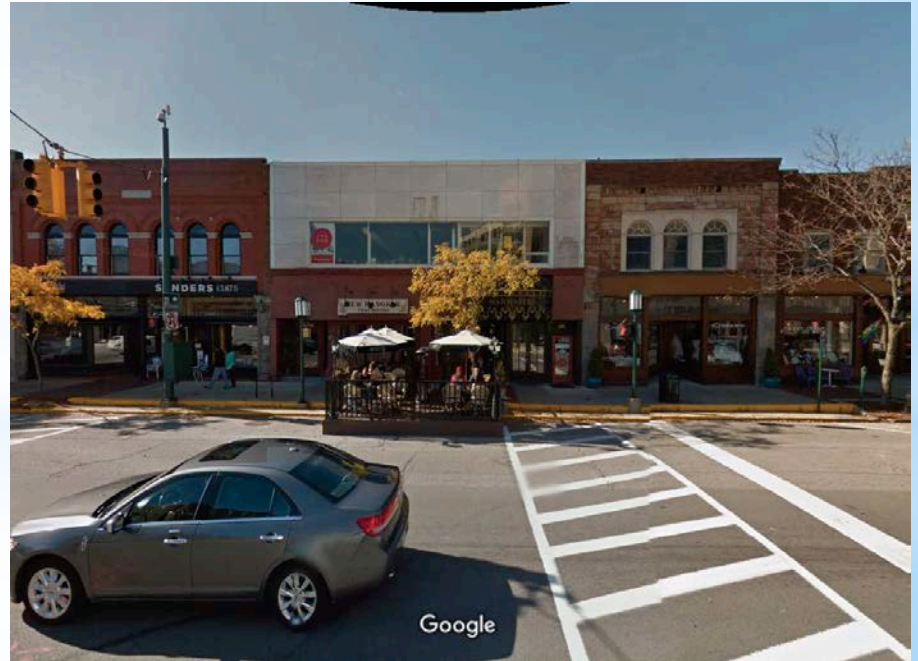


Old Woodward Ave. Reconstruction Project 2017



WHY?



WHY?



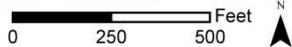
WHY?

DOWNTOWN BIRMINGHAM 2016 MASTER PLAN

- * Narrowed Streets
- * New Consistent Sidewalks
- * New Street Lights
- * Upgraded, Consistent Amenities
- * Downtown Projects
 - * 2004 - Brown St. Plaza
 - * 2005 - Willits Alley
 - * 2008 - Maple & Chester Plaza
 - * 2008 - Old Woodward & Oakland Plaza
 - * 2009 - Pierce St./Townsend St.
 - * 2009 - Shain Park
 - * 2010 - Streets Around Shain Park
 - * 2013 - Pierce St./Merrill St.
 - * 2015 - Hamilton Alley
 - * 2015 - Martin St. at Chester St. Structure
 - * 2016 - Hamilton Ave./Park St.



Phase 1



Upcoming Projects:

2017

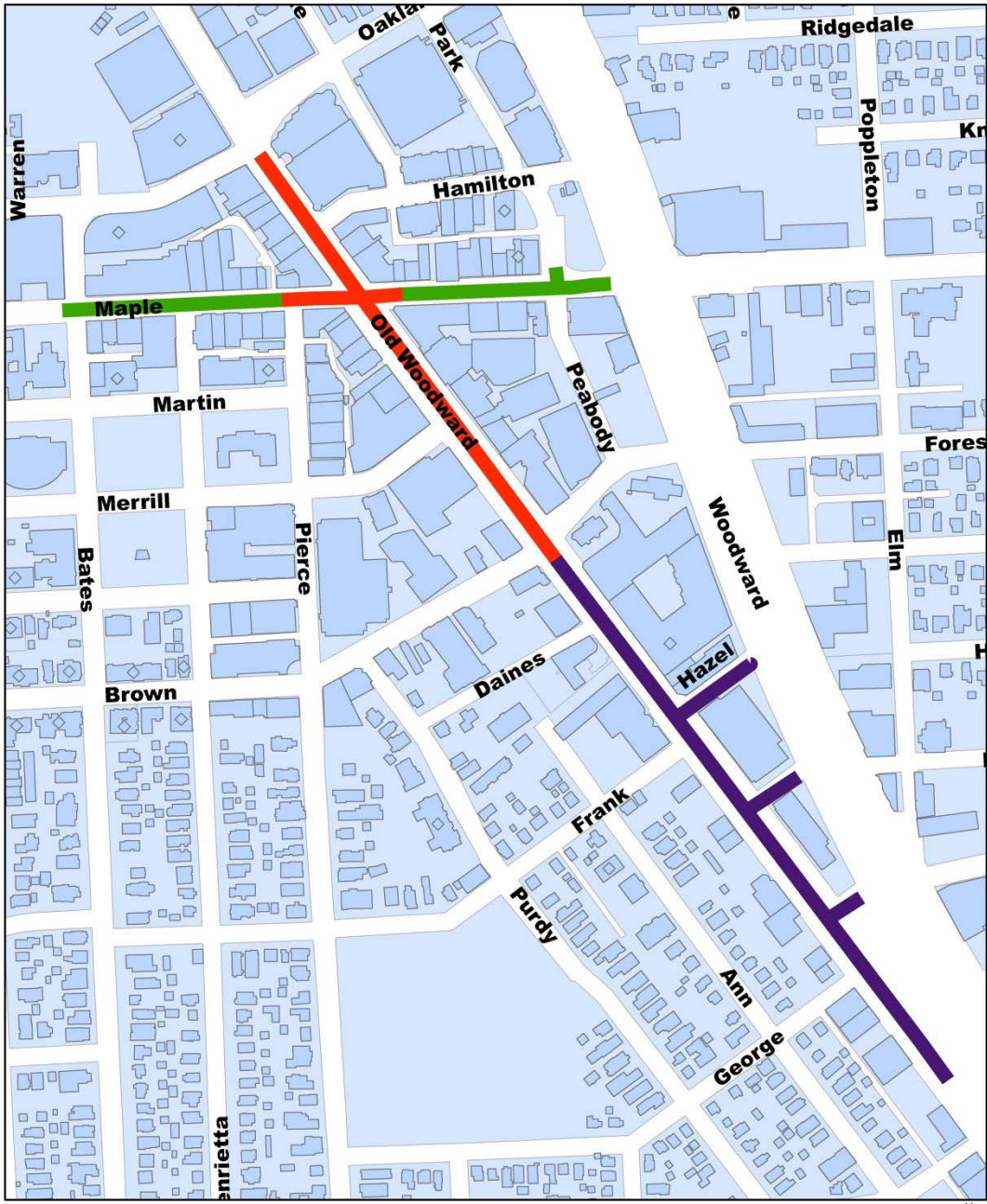


Upcoming Projects:

2019

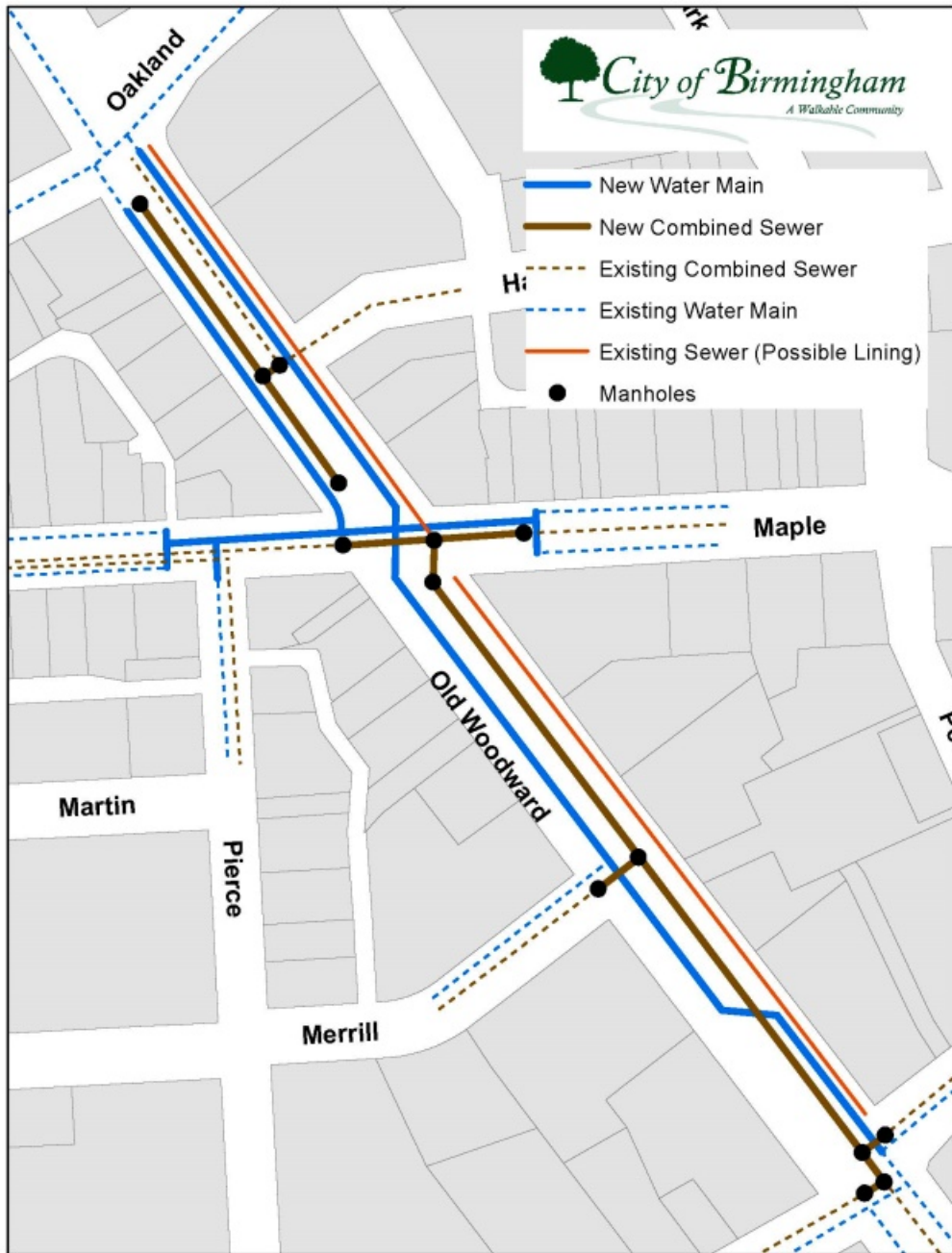
Phase 1 Phase 2

0 250 500 Feet



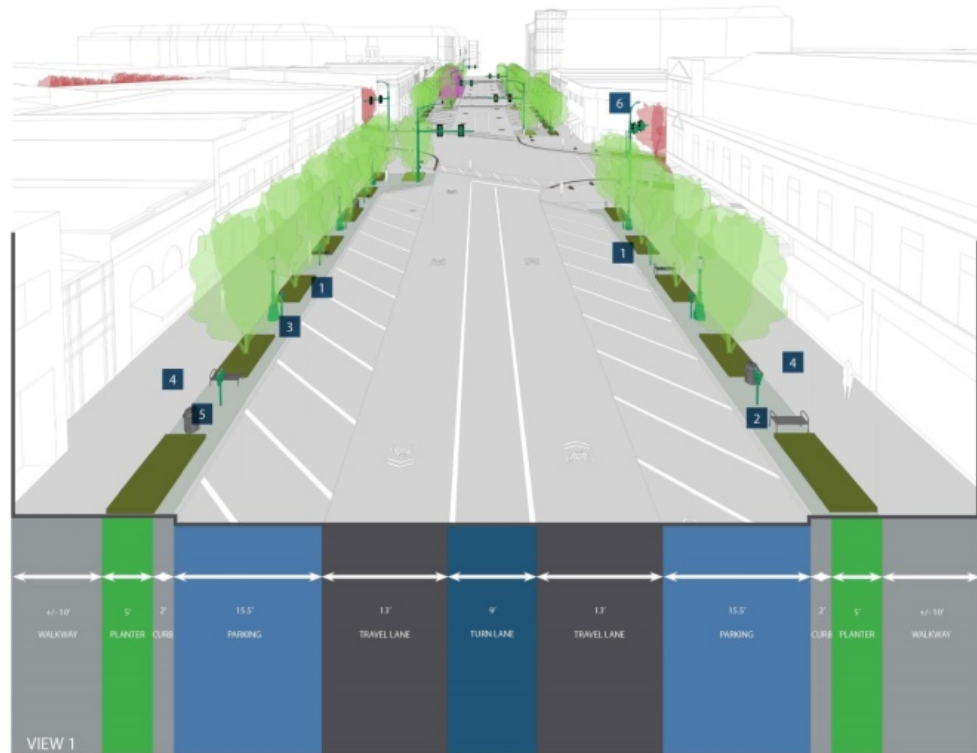
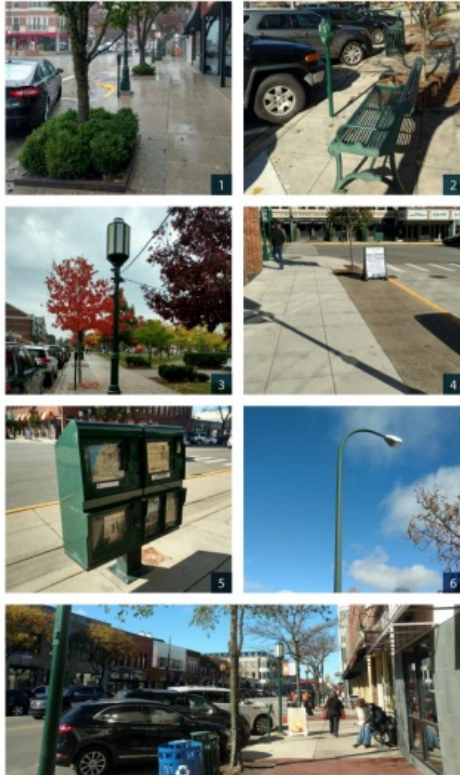
Upcoming Projects:

2021



Underground Improvements

- Water
- Sewer
- Street Lights
- Traffic Signals
- Irrigation
- Electrical
- Communications

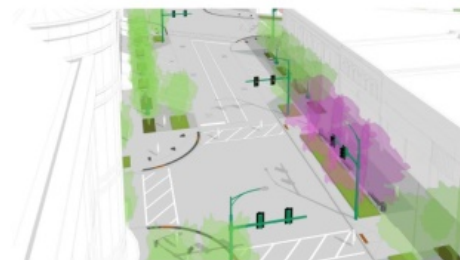


CITY OF BIRMINGHAM | OLD WOODWARD AVE & MAPLE DRIVE CORRIDOR PLAN

66' ROADWAY SECTION | STANDARD MATERIALS



KEY PLAN



VIEW 2



VIEW 3

CITY OF BIRMINGHAM

OLD WOODWARD AVENUE AND MAPLE DRIVE CORRIDOR PLAN



66' ROADWAY SECTION | STANDARD MATERIALS



OLD WOODWARD AVE & MAPLE ROAD | BEFORE

- 1 CROSSWALK
- 2 GRANITE BOLLARD
- 3 SIGNALS W/ LIGHT
- 4 ADA RAMP
- 5 UP-RIGHT STREET TREE
- 6 CANOPY STREET TREE
- 7 FLUSH TREE PLANTER
- 8 BENCH SEATING

LEGEND

BIRMINGHAM'S 6-POINT LOGISTICS PLAN

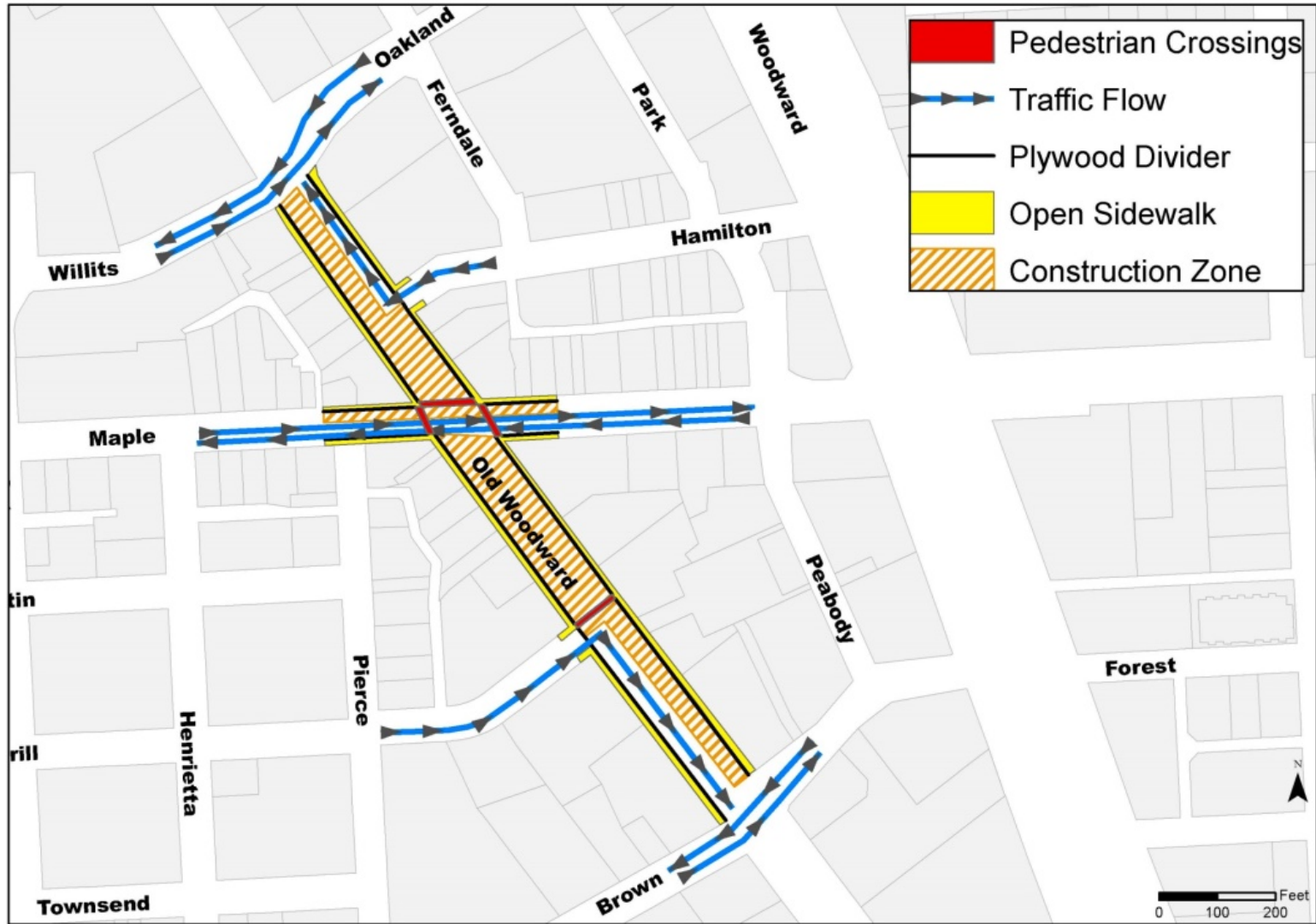
- * Keep project moving quickly
- * Keep sidewalks open and front doors accessible
- * Keep traffic flowing
- * Keep communications flowing
- * Keep public parking easy and accessible
- * BSD Promotional Activities

1. Keep Project Moving Quickly

- * Hire Contractor with Experience
- * Expand Available Work Hours
- * Bonus/Penalty Clause
- * Encourage multiple crews

2. Keep Sidewalks Open and Front Doors Accessible

Sidewalk Crossings Routes

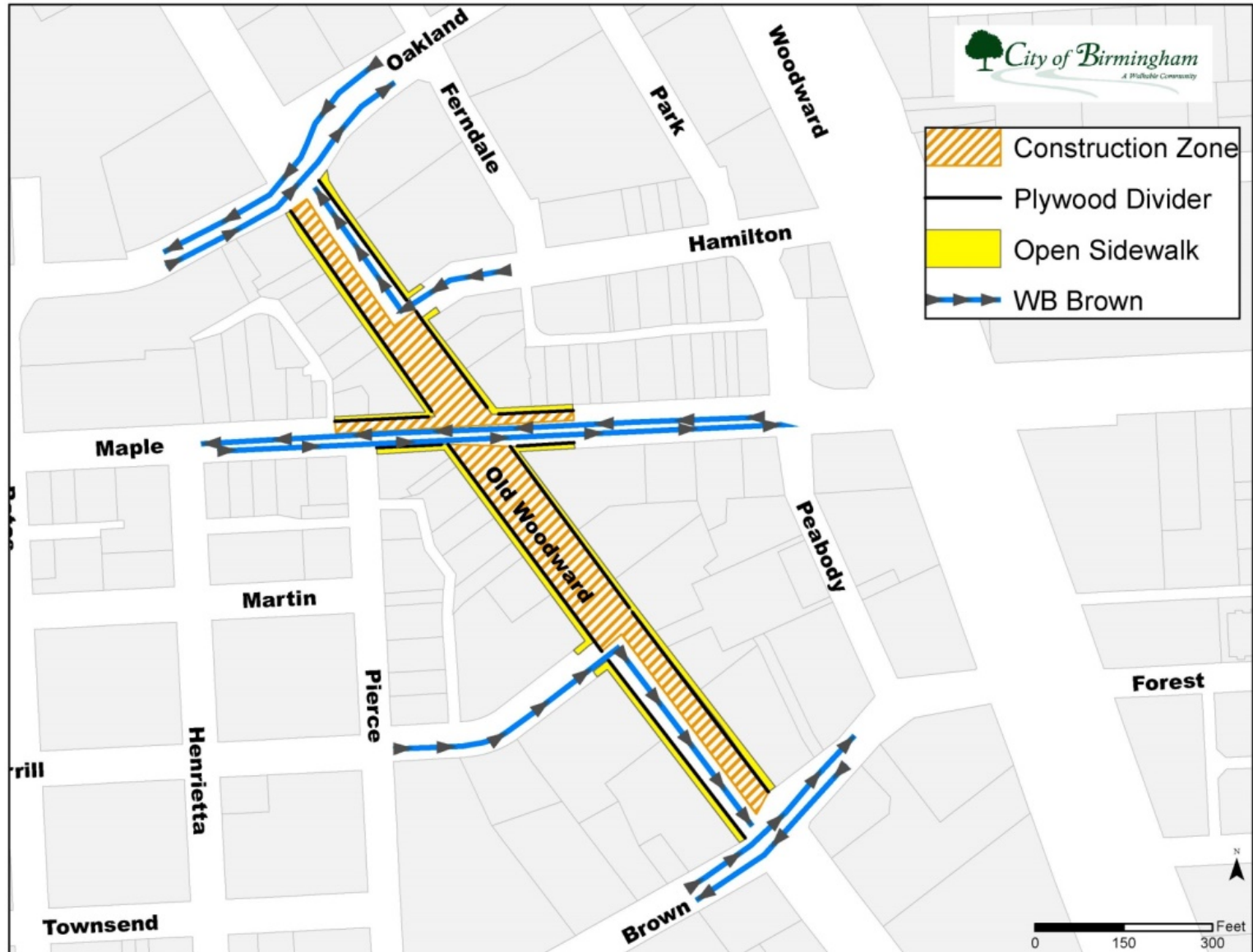


2. Keep Sidewalks Open and Front Doors Accessible



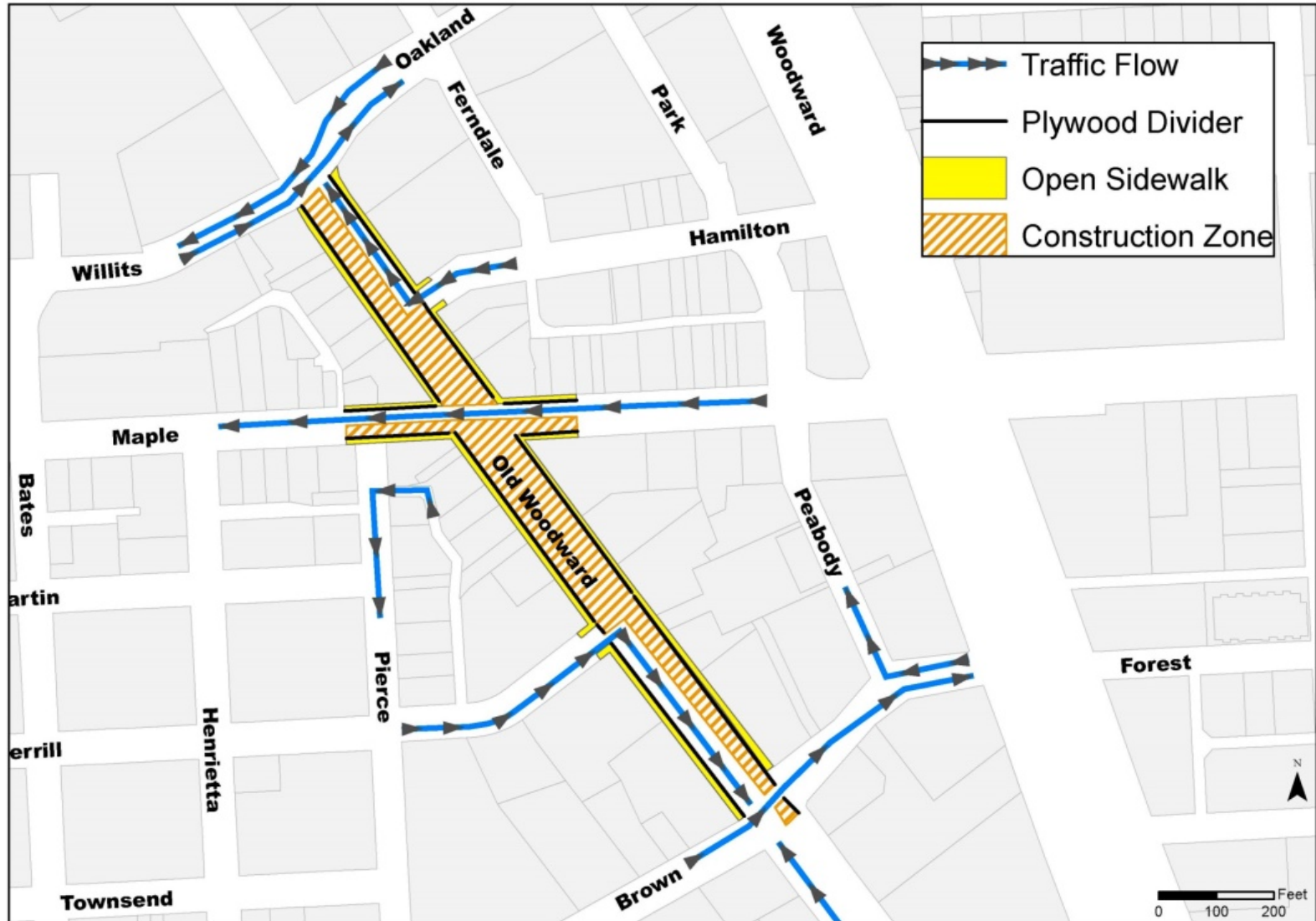
Sidewalk Removal and Replacement Goal: 48 Hours

3. Keep Traffic Flowing



3. Keep Traffic Flowing

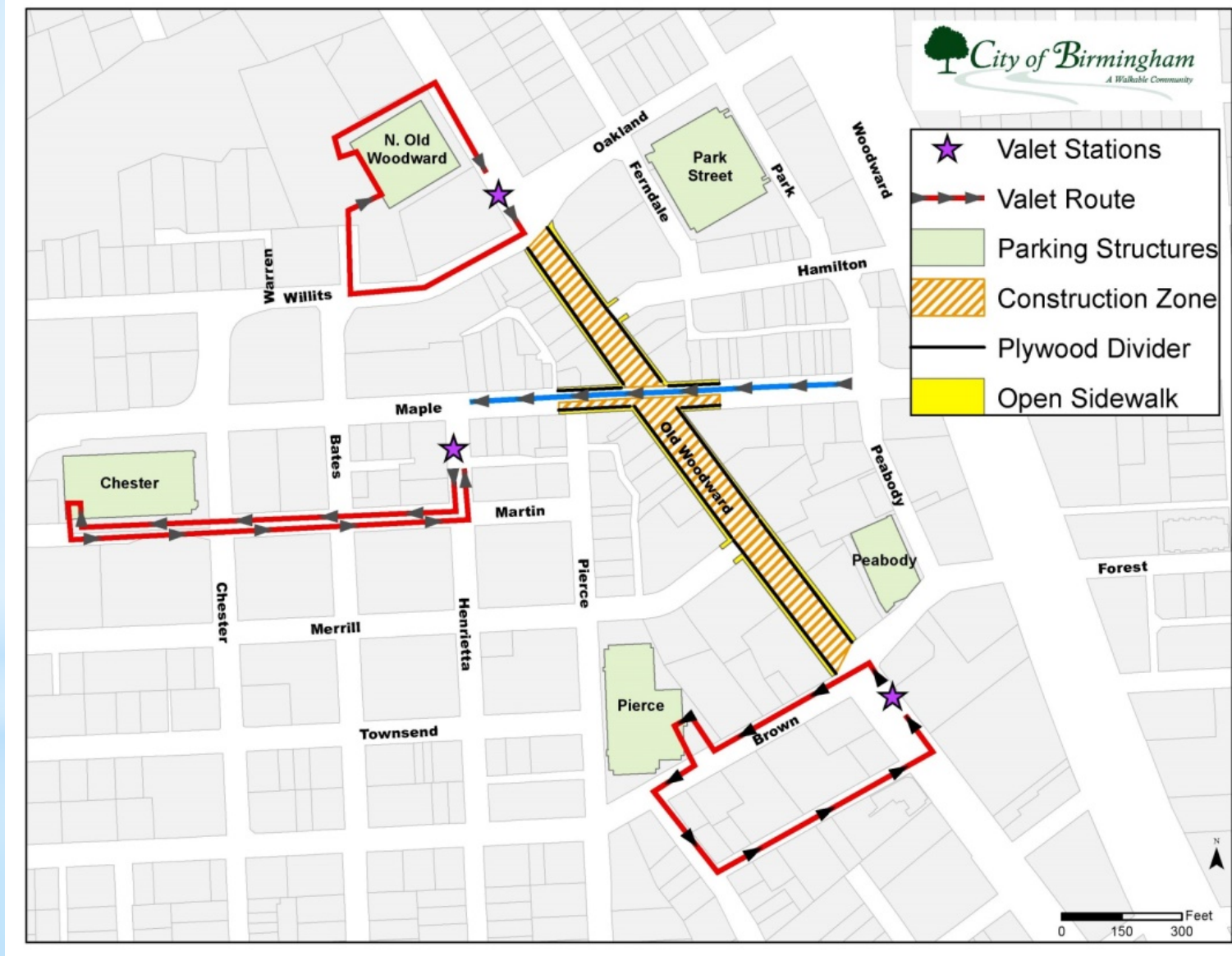
Detour Routes



4. Keep Communications Flowing

- * Constant Contact by Email:
www.bit.ly/bhamnews
- * Flyers at each Door
- * City Inspectors and Contractor Foreman on Site
- * Engineering Dept. at City Hall (248-530-1836)
- * Police Dept. after Hours (248-530-1870)
- * Website
- * BSD/City Social Media

5. Keep Public Parking Easy and Accessible



Pay by:
Coin
Credit Card
Debit Card
Parkmobile

NEW PARKING METERS



6. BSD Promotional Program

HOW MUCH?

Construction Cost Estimate = \$3.5 Million

Sources:

- 1) Street Fund
- 2) Water Fund
- 3) Sewer Fund
- 4) Capital Improvement Fund
- 5) Parking Fund
- 6) Special Assessments

HOW MUCH?

- * Sidewalk Assessment (75% of Value)

 - Est. at \$13/sq.ft.

 - 50 ft. frontage = \$10,750

- * Sewer Lateral Replacement

 - Est. at \$90/l.ft.

 - 35 ft. length = \$3,150

HOW LONG?

Questions?